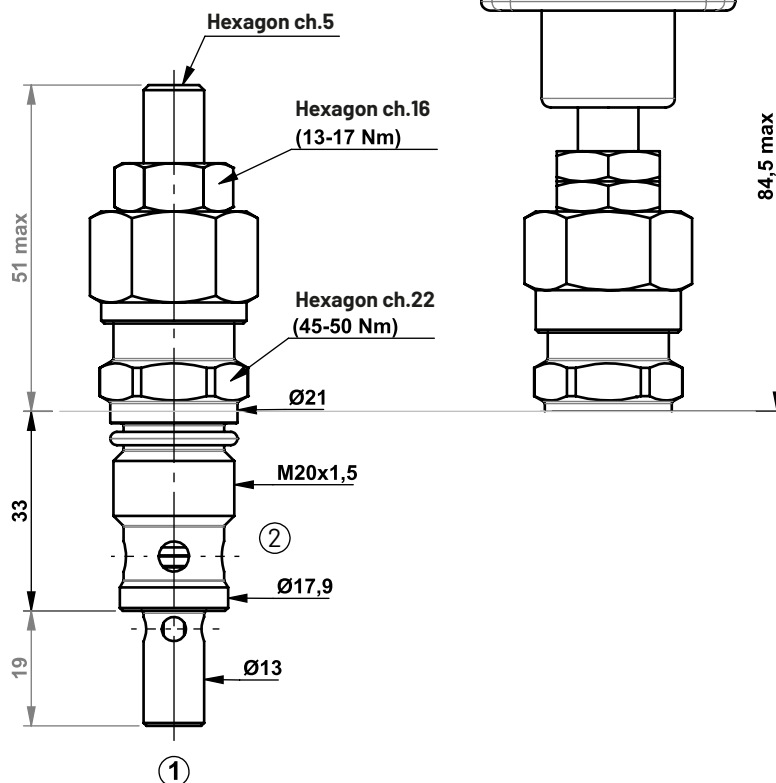




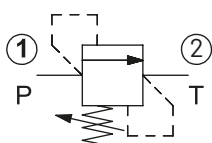
7.1

Adjustment with hand knob

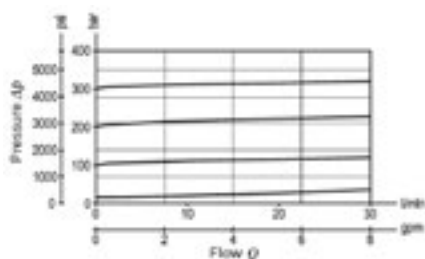
Adjustment with screw



Hydraulic circuit



Characteristic curve



Technical characteristics

Max working pressure port 1(P)	350 bar
Max working pressure port 2(T)	140 bar
Max flowrate	30 l/min
Internal leakage (*)	15 drops/min
Working fluid temperature	-30 / +100 °C
Torque	45+50 Nm
Weight (**)	0,17 kg
Cavity	C20 (see p. 20.2)
Cavity plug	FVTA20000000 (see p.10.1)
Fluid	mineral or synthetic base with lubricating properties, viscosity between 10 and 500 cSt
Degree of fluid contamination	Max. nominal value 10 µm (NAS 8) ISO 4406 19/17/14

(\*) At 80% of the calibration pressure

(\*\*) Standard version with screw adjustment