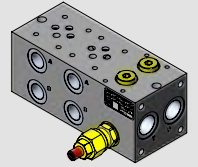


CETOP3 - NG6

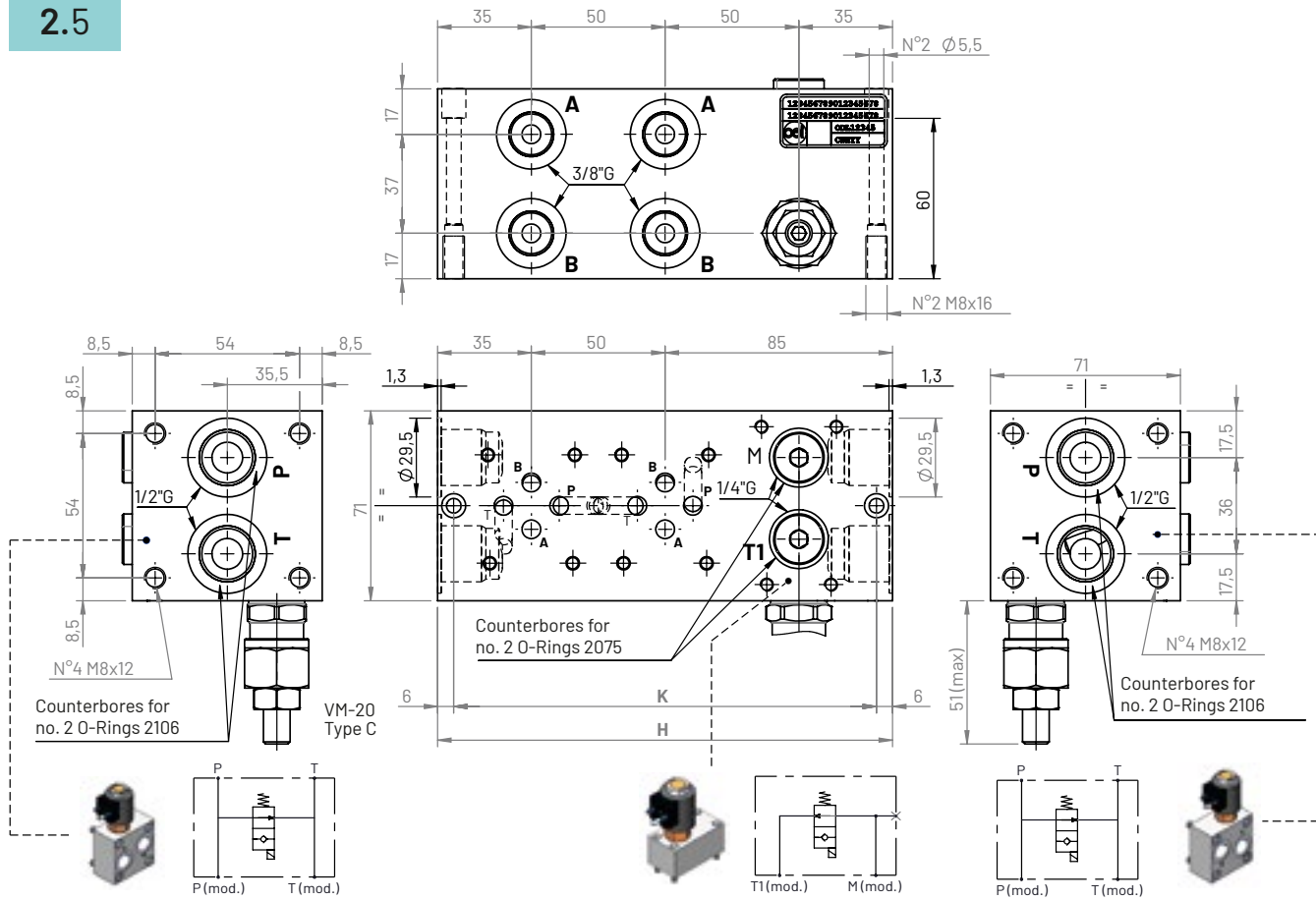
Type  
Model

312  
CMB312\*-S\*-3C-\*\*C

Monoblock with 1/2"G P-T ports on both short sides, 3/8"G A-B ports on lateral side, serial version, with/without relief valve (VM-20) **Modular compatibility only with 313 types**



2.5

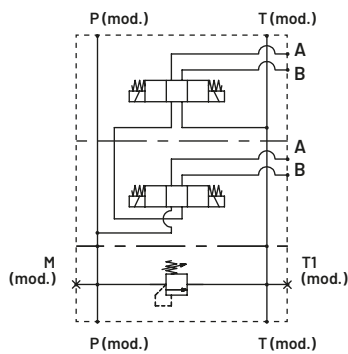


**CBA350\*-\*\*\*-D**  
Accessory block (see p. 3.1)

**CBA351\*-\*\*\***  
Accessory block (see p. 3.3)

**CBA350\*-\*\*\*-S**  
Accessory block (see p. 3.2)

Hydraulic circuit



Positions	H (mm)	K (mm)	Aluminum (kg)	Cast iron (kg)
2	170	158	2,3	5,6
3	220	208	2,9	7,2
4	270	258	3,6	8,8

Ordering code

**CMB 3 12 \* - S \* - 3 C - \* \* C**

Monoblock: **CMB**  
 Flange **CETOP 3**  
 Configuration type: **12**  
 Material:  
**G** (Phosphated cast iron GJL250)  
**A** (aluminum EN AW-6026 LF without anodization)  
**B** (aluminum EN AW-6026 LF with neutral anodization)  
**Other materials on demand**  
 Connection: **S** (series)  
 Positions: **2, 3, 4**  
 Ports size:  
**3** (P-T: 1/2G - A-B: 3/8G)  
 Ports position: **C** (lateral side)  
 Cavity VM-20:  
**V** (included) technical info → p. 7.1 **T** (with cavity plugged)  
**L** (with cavity open) **N** (without cavity)  
 Spring set (omit with L-T-N present):  
**W**: 5-50 bar **X**: 30-100 bar  
**Y**: 50-210 bar **Z**: 100-350 bar  
 Adjustment (omit with L-T-N present):  
**C** (with screw)