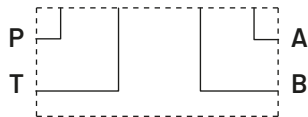


Hydraulic circuit



Weight

Aluminum (kg)	Cast iron (kg)
1,2	3

Ordering code

CBS 3 05 * - 4 D

Single subplate: **CBS**

Flange CETOP: **3**

Configuration type: **05**

Material:

G (Phosphated cast iron GJL250)

A (aluminum EN AW-6026 LF without anodization)

B (aluminum EN AW-6026 LF with neutral anodization)

Other materials on demand

Ports size:

4 (P-T-A-B: 1/2G)

Ports position: **D** (long lateral side)

