

CETOP3 - NG6

Single subplate with 1/4"G or 3/8"G
P-T-A-B ports on long side

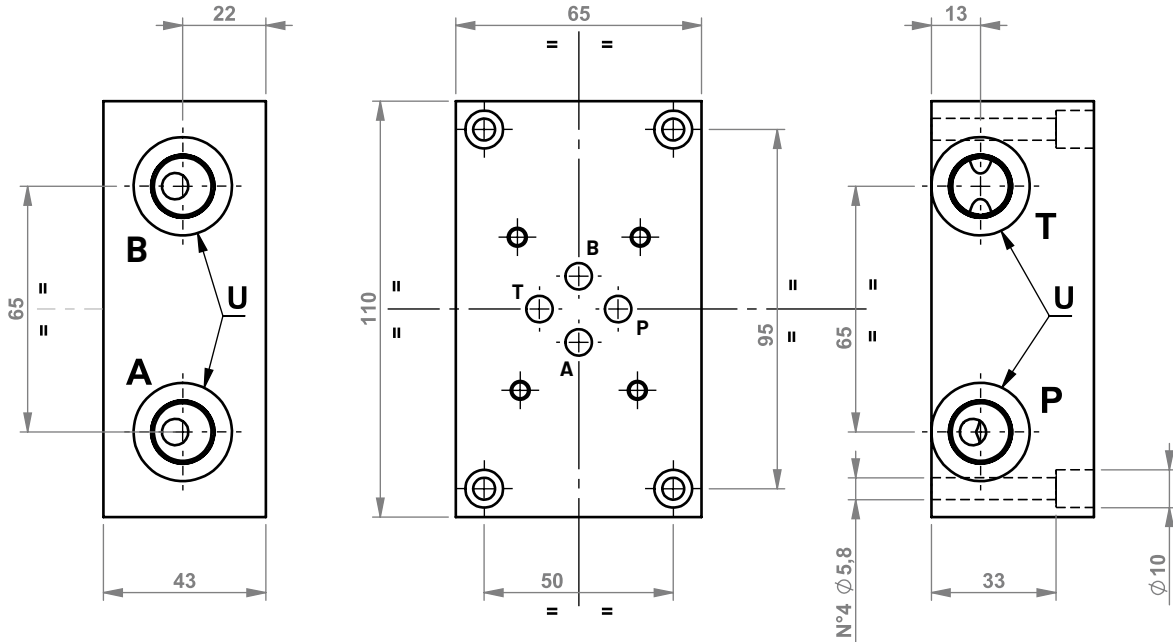
Type
Model

302

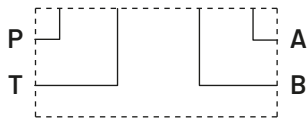
CBS302*-*D

SINGLE
SUBPLATE

1.6



Hydraulic circuit



Weight

Aluminum (kg)	Cast iron (kg)
0,5	1,9

Ordering code

CBS 3 02 * - * D

Single subplate: **CBS**

Flange CETOP: **3**

Configuration type: **02**

Material:

G (Phosphated cast iron GJL250)

A (aluminum EN AW-6026 LF without anodization)

B (aluminum EN AW-6026 LF with neutral anodization)

Other materials on demand

Ports size:

0 (P-T-A-B: 1/4G)

2 (P-T-A-B: 3/8G)

Ports position: **D** (long lateral side)