



CETOP3 - NG6

302

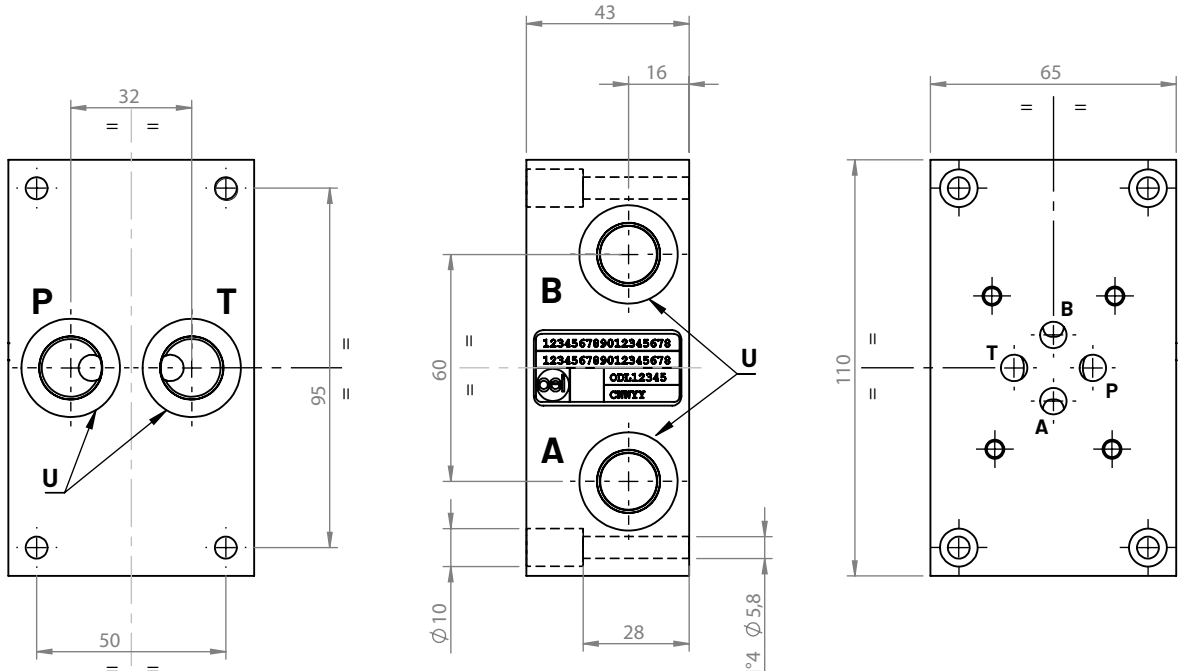
CBS302*-*A

Single subplates with 3/8" G P-T ports on back side, 3/8" G or 1/2" G A-B ports on long side

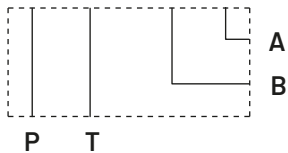
Type
Model

SINGLE
SUBPLATE

1.4



Hydraulic circuit



Weight

Aluminum (kg)	Cast iron (kg)
0,8	2

Ordering code

CBS 3 02 * - * A

Single subplate: **CBS**

Flange CETOP: **3**

Configuration type: **02**

Material:

G (Phosphated cast iron GJL250)

A (aluminum EN AW-6026 LF without anodization)

B (aluminum EN AW-6026 LF with neutral anodization)

Other materials on demand

Ports size:

2 (P-T-A-B: 3/8G)

4 (P-T-A-B: 1/2G)

Ports position: **A** (back and lateral side)