



Sandwich plate with 1/4"G or 3/8"G ports on short side

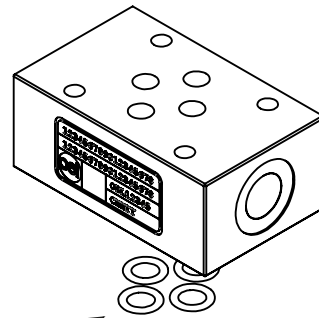
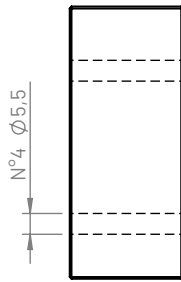
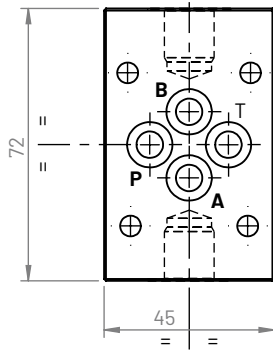
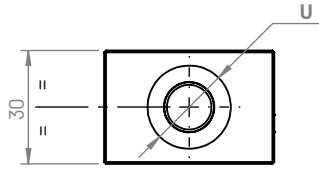
CETOP3 - NG6

Type  
Model

308  
CBS308\*-\*-\*

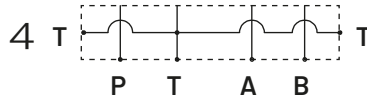
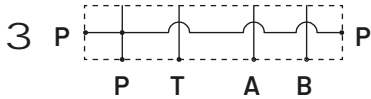
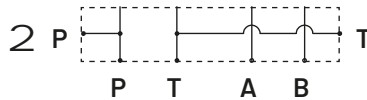
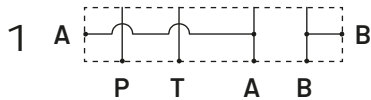
SINGLE  
SUBPLATE

1. 12



Sandwich plate includes:  
- no. 4 O-Rings 108 (8,73x1,78) NBR90

Hydraulic circuits



Weight

Aluminum (kg)	Cast iron (kg)
0,24	0,66

Ordering code

**CBS 3 08 \* - \* - \***

Sandwich plate: **CBS**

Flange CETOP: **3**

Configuration type: **08**

Material:

**G** (Phosphated cast iron GJL250)

**A** (aluminum EN AW-6026 LF without anodization)

**B** (aluminum EN AW-6026 LF with neutral anodization)

**Other materials on demand**

Connections:

**1** (A-B)

**2** (P-T)

**3** (P-P)

**4** (T-T)

Ports size:

**0** (1/4"G)

**2** (3/8"G)