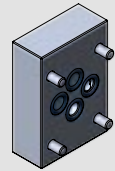


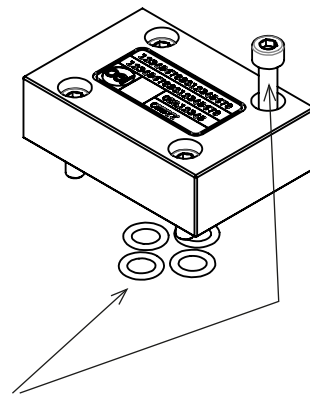
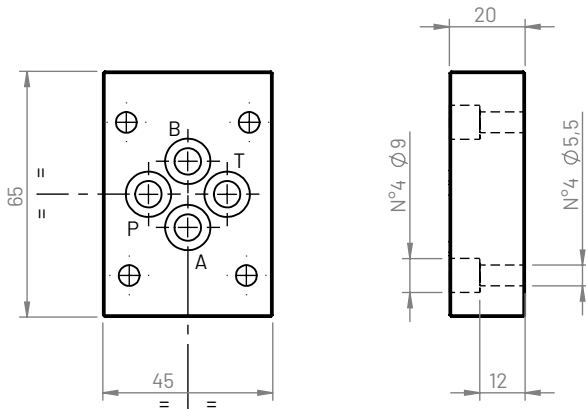
Type
Model

307
CBS307*-*

End and crossing plate
P-T-A-B combinations

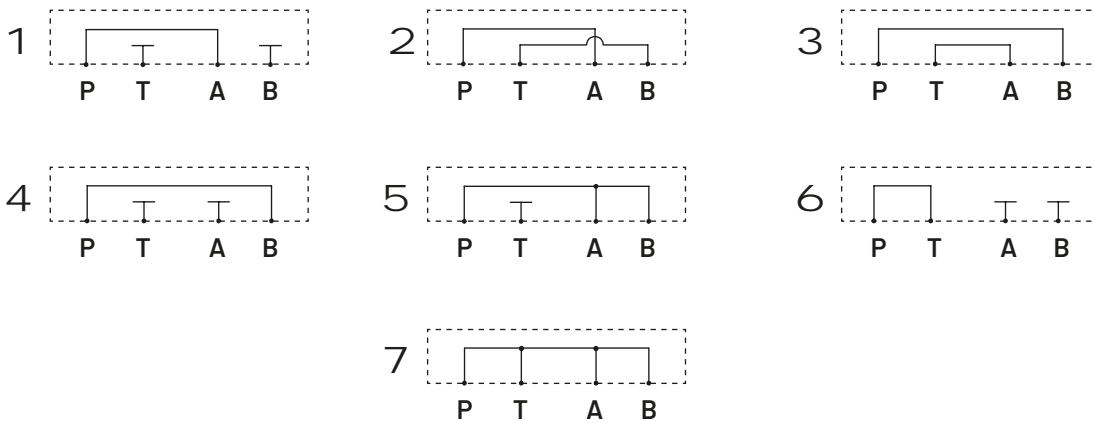


1. 11



End and crossing plate includes:
- no. 4 screws M5x20 UNI5931
- no. 4 O-Rings 108 (8,73x1,78) NBR90

Hydraulic circuits



Ordering code

CBS 3 07 * - *

End and crossing plate: CBS

Flange CETOP: 3

Configuration type: 07

Material:

G (Phosphated cast iron GJL250)

A (aluminum EN AW-6026 LF without anodization)

B (aluminum EN AW-6026 LF with neutral anodization)

Other materials on demand

Weight

Aluminum (kg)	Cast iron (kg)
0,15	0,41

Connections:

- 1 (P to A, T-B closed)
- 2 (P to A, T to B)
- 3 (P to B, T to A)
- 4 (P to B, T-A closed)
- 5 (P to A-B, T closed)
- 6 (P to T, A-B closed)
- 7 (P to T-A-B)